

North Ex Public School
(Senior Secondary, Affiliated To CBSE)
School Block, Jain Nagar, Sector-38, Rohini, Delhi-81
Subject– E.V.S (Session 2020-2021)

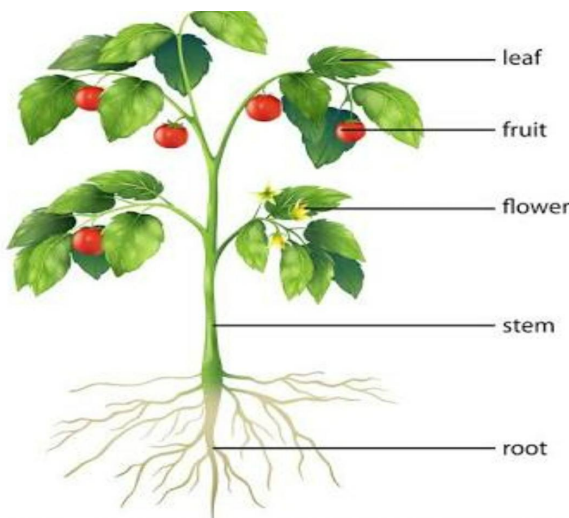
CLASS – II

Chapter- 3

Plants

Points to remember

- Like humans plants are also living beings. They can't move but grow.
- Plants need air , water and sunlight to grow.
- Plants are very useful to us.
- Plants make environment green and clean.
- Plants keep air fresh & cool.
- We get grains, vegetables & fruits from plants.
- Parts of plants are : Root, stem, leaves, flower, fruits & seeds.
 - **Roots** absorb water & minerals from soil.
 - **Stem** carry food and water to all other parts of a plant.
 - **Leaves** prepare food for the plants.
 - **Flowers** produce seeds or fruits.
 - **Fruits** contain seeds.
- Plants are of different types: Trees, Shrubs, Herbs, Creepers & Climbers.
 - **Trees** are very big and strong plant. A tree has brown, thick & wooden stem, which is called **trunk**. For examples: **Mango tree, Banyan tree**.
 - **Shrubs** are smaller than trees. They have hard stem. They are bushy. For example : **Rose, Cotton, Jasmine**.
 - **Herbs** are smaller and weak plants. They have green stem. Some herbs are also used as medicines. Like **Mint & Tulsi**. Some other examples are **Spinach, Coriander**.
 - **Climbers** are very weak plant . They can't grow straight. They need support to grow. For example: **beans, peas, money plant**.
 - **Creepers** are grow along the ground. They have very heavy fruit. For example: **water melon & pumpkin**.



North Ex Public School
(Senior Secondary, Affiliated To CBSE)
School Block, Jain Nagar, Sector-38, Rohini, Delhi-81
Subject– E.V.S (Session 2020-2021)
CLASS – II Worksheet 3

Note- Before attempting the worksheet you must check the video link given below which will help you in doing the same correctly.

You can download the worksheets or if you do not have facility to get printout then you can ask your ward to copy the worksheet in a simple note book and must do exercise and question answers in the note book.

Link : <https://youtu.be/acHCs1vwVpl>

EXERCISE WORK

Ques.1 Answer these

1. Name any two products obtained from plants.

2. Write 3 uses of plants.

3. Name the parts of plants.

Ques.2 Match the different parts of the plant with their functions.

Parts of plant

1. Leaves
2. Fruits
3. Stem
4. Roots
5. Flowers

Functions





- a. carry food and water to all other parts.
- b. the parts that produce seeds or fruit.
- c. contain seeds.
- d. prepare food for the plants.
- e. it absorbs water & minerals from the soil.

Ques.3 Fill in the blanks.

1. Strong and woody stem is called _____.
2. _____ is a part of plant from which a baby plant grows.
3. Plants need _____ & _____ to grow.
4. _____ supports the plants.

Stem seed sunlight trunk air

Ques.4. Match the types of plants with their examples.

S.N.	Types of plants		Examples
1.	Tree	a.	
2.	Shrub	b.	
3.	Herb	c.	
4.	Climber	d.	
5.	Creeper	e.	